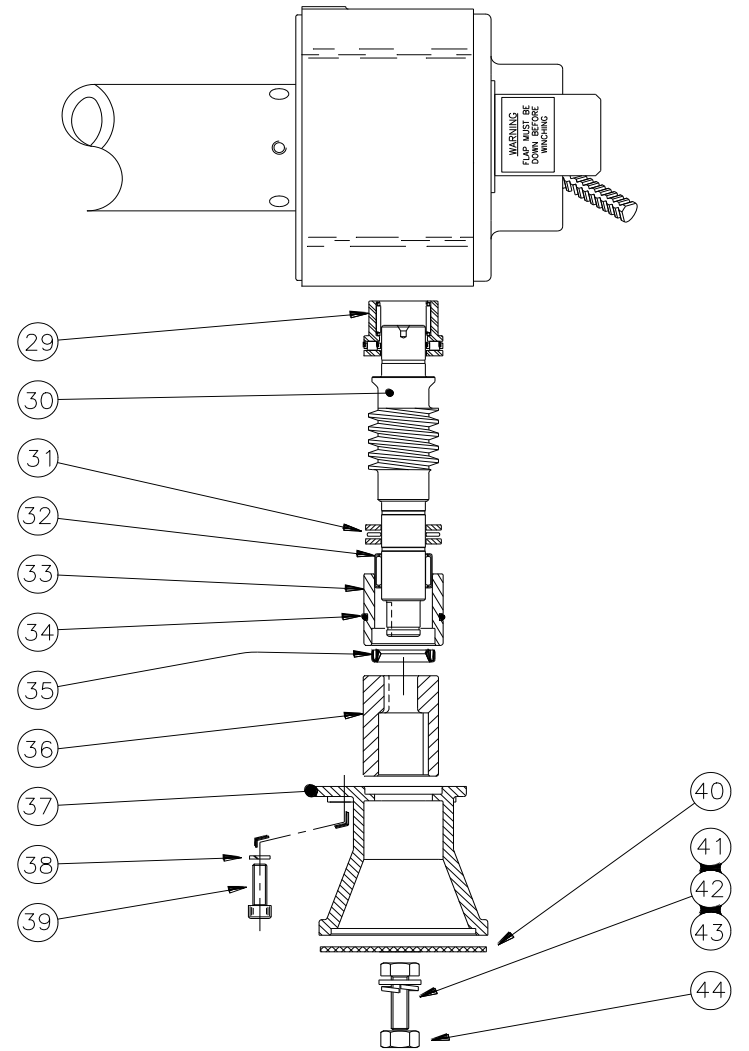
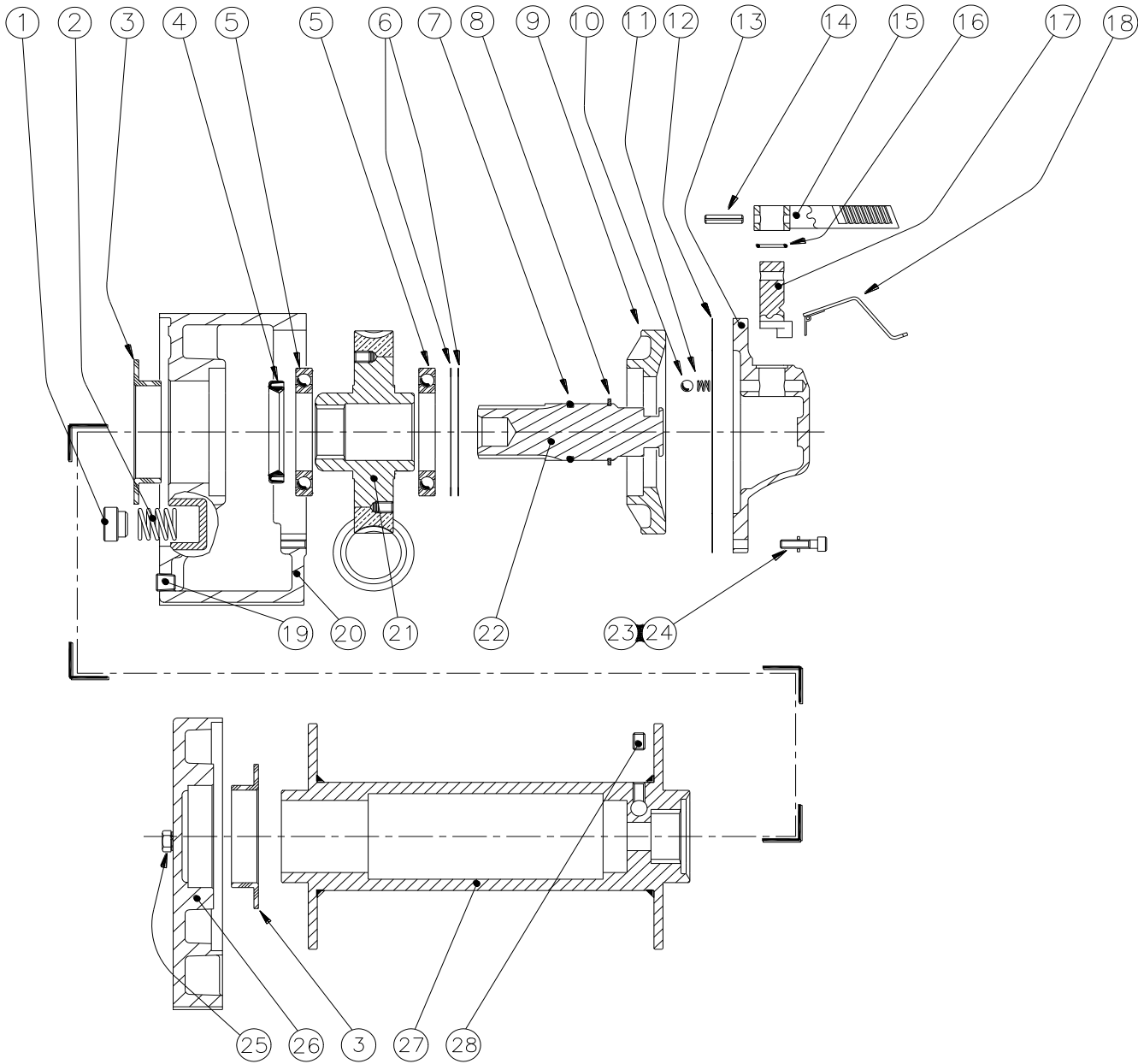


H9W Exploded View Parts List



H9W Parts List

<i>ITEM:</i>	<i>DESCRIPTION:</i>	<i>PART No:</i>	<i>QTY</i> :		<i>ITEM:</i>	<i>DESCRIPTION:</i>	<i>PART No:</i>	<i>QTY</i>
1	Brake Shoe	317	2		23	Cap Hd Screw, M6 X 25mm	4-36-0602522	8
2	Brake Spring	320	2		24	Spring Washer, M6	4-51-0623	8
3	Flanged Bearing	7658	2		25	Set Screw, M8 X 16mm	4-32-0801622	2
4	Oil Seal	4-22-5572103	1		26	Support Housing	7645	1
5	Ball Bearing	4-13-55090113	2		27	Rope Drum Assembly	85-90005	1
6	Shim, 0.07mm	4-01-8090073	A/r		28	Skt Set Screw, M8 X 12mm	4-40-081203	1
6	Shim, 0.12mm	4-01-8090123	A/r		29	Roller / Thrust Bearing	7721	1
7	'O' Ring	4-21-7813	1		30	Worm / Wormset Assembly	85-95019	1
8	Circlip	4-24-4053183	1		31	Thrust Washer	4-03-2542303	2
9	Bearing Carrier	7654	1		31	Thrust Bearing	4-07-2542203	1
10	Steel Ball	4-54-79324	1		32	Needle Bearing	4-12-25322013	1
11	Spring	4-31-7629510223	1		33	Location Plug	7667	1
12	Gasket	7688	1		34	'O' Ring	4-21-6543	1
13	Clutch Housing	7652	1		35	Oil Seal	4-22-2535073	1
14	Roll Pin	4-56-602603	1		36	Motor / Wormshaft Coupling	94-20060	1
15	Operating Lever	7673	1		37	Motor Housing Support	94-32170	1
16	'O' Ring	4-21-6423	1		38	Spring Washer, M8	4-51-0823	4
17	Clutch Shaft	7676	1		39	Cap Hd Screw, M8 X 25mm	4-36-0802522	4
18	Safety Flap Assembly	10161	1		40	Cardboard Flange Cover.	4-150-006	1
19	Pressure Plug	4-29-224	2		41	Set Screw, M12X 45	4-33-1204522	2
20	Wormbox	7643	1		42	Plain Washer, M12	4-50-1223	2
21	Wormwheel / Worm set	85-95019	1		43	Spring Washer, M12	4-51-1223	2
22	Clutch Member	7659	1		44	Full Nut, M12	4-47-1223	2
					N/S	Hydraulic Motor Assembly	85-90231	1