

B&C Winches

BC3500

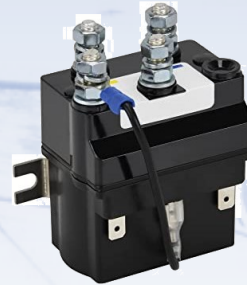
It's what's inside which makes it Stronger and Perform better. !!!



Larger, wider, stronger steel gearing



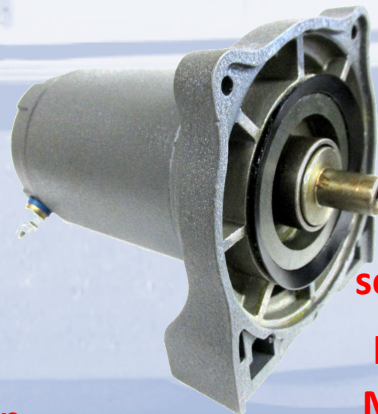
Larger drum barrel & thicker plates true strength for synthetic ropes



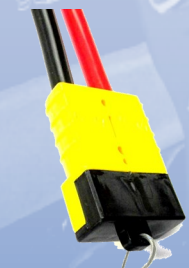
Sealed solenoid Silver contacts Higher duty cycle



Safety off switch to prevent unintended use.



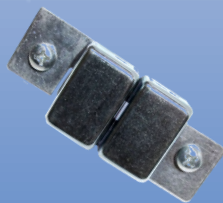
Heavy duty sealed motor & gearbox prevents water entry. Mechanical & dynamic braking for safety



Fitted with Anderson Plugs on 1.8M 6 awg COPPER power leads.



Longer plug in remote



Circuit breaker



Dual use remote for both wireless or corded control Australian Licence compliant